

The Only Accredited & Austudy Approved  
**Feng Shui** course and **Four Pillars of Destiny**  
course in Australia & IFSA Accredited.

**\*Australia \_ VRQA**



Victorian Registration &  
Qualifications Authority



**\*Internationally \_ IFSA**



[sally@ministryoffengshui.com.au](mailto:sally@ministryoffengshui.com.au)  
[www.ministryoffengshui.com.au](http://www.ministryoffengshui.com.au)  
Ministry#0405929658

## Ministry of Feng Shui 2012

*“The Water Dragon”*

Brings a profound shift in  
consciousness.



壬辰

### Courses & Workshops

The Only Accredited & Austudy Approved  
Feng Shui course and Four Pillars of Destiny course in  
Australia & IFSA Accredited

The Ministry of Feng Shui is a “Registered  
Training Organisation (21900)”

<b>Content</b>	<b>Page</b>
<b>Why choose a career in Feng Shui/Four Pillars</b>	<b>3</b>
<b>Feng Shui course requirements</b>	<b>4</b>
<b>Feng Shui Introduction</b>	<b>5</b>
<b>Feng Shui Sunday (day) Classes</b>	<b>Attached</b>
<b>Feng Shui Tuesday (day) classes</b>	<b>Attached</b>
<b>Feng Shui Evening Classes</b>	<b>Attached</b>
<b>Four Pillars course requirements</b>	<b>6</b>
<b>Four Pillars Introduction</b>	<b>7</b>
<b>Four Pillars Evening Classes</b>	<b>Attached</b>
<b>Four Pillars Sunday (day) Classes</b>	<b>Attached</b>
<b>Four Pillars Wednesday (day) classes</b>	<b>Attached</b>
<b>2012 free Yearly Workshop</b>	<b>8</b>
<b>Book a Workshop-venues</b>	<b>9</b>
<b>Books, Tools, Calendar</b>	<b>10</b>
<b>Cosmic inner smile</b>	<b>11</b>
<b>Physiognomy</b>	<b>12</b>
<b>Form School-Environment</b>	<b>13</b>
<b>I Ching</b>	<b>14</b>
<b>Feng Shui Part 2</b>	<b>15</b>
<b>Four Pillars 2</b>	<b>16</b>
<b>Chi Homes</b>	<b>17</b>

**You must book for the workshops**

Please text; **0405929658**

Number of people and to which venue.

Or Email

[sally@ministryoffengshui.com.au](mailto:sally@ministryoffengshui.com.au)

[www.ministryoffengshui.com.au](http://www.ministryoffengshui.com.au)

**Why Choose a Career in Feng Shui?  
Why choose a career in Four Pillars?**

**Any student learning Feng Shui or Four Pillars of Destiny will have that for life.**

**The Certificate IV in both courses will never be outdated or superseded by anything better. E.g.: A student starting a 3/4 year Technical Degree, half of what they have learnt in the first year will be outdated by their 2<sup>nd</sup> or 3<sup>rd</sup> year of study.**

**In Feng Shui & Four Pillars of Destiny, what you learn in the Certificate IV is never changing.**

**How you apply/deliver it won't change.**



# 風水

2012-13

## “Certificate IV in Feng Shui Consultancy” (22172VIC)

### Recommended books:

Feng Shui & Destiny - Grand Master Raymond Lo  
Feng Shui the Perfect Arrangement - Gahle Atherton  
Myths, Tools and Cures - Sally Fischmann

### Equipment required:

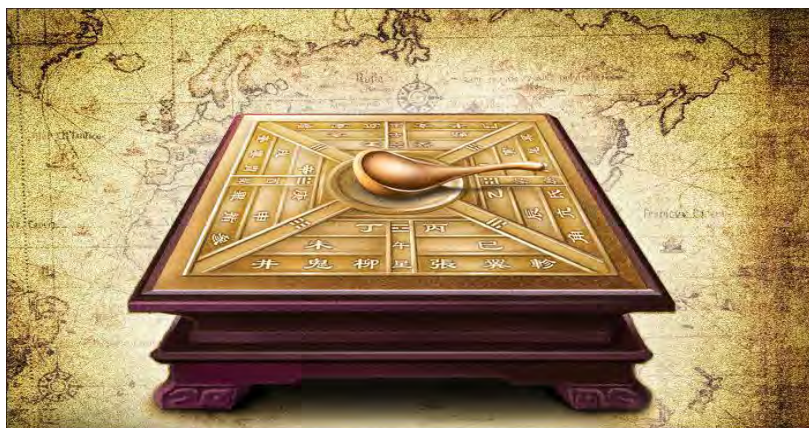
A **Lo Pan** Compass (English version)

Order for first lesson from;

**The Ministry or Grand Master Lo.**

- Courses are taught at the “Sacred Keys” healing and learning centre

**Prerequisites are an open mind, Commitment and time.**



This formal course offers a complete & thorough training in pure & classical Feng Shui principles, gaining the necessary professional knowledge to pursue a Feng Shui career with an excellent standard.

The training includes introduction to **Form School & Flying Star** Feng Shui, all schools, history, origin & basic theories, drawing up charts for homes, business & design, practical reports & recommendations which include luck, health, wealth, cures, remedies internal & external maintenance.

Upon completion of the Course units & assessments, students will receive a “**Certificate IV in Feng Shui Consultancy**”

The units cover comprehensive Feng Shui theory, skills, knowledge & management required to practice as a Feng Shui Consultant.

Practical examples with field visits to include: Land blocks, cafes, factories, businesses & homes. The course is based on the pure & classical principles of this science, not fads, gimmicks or new age methods.

This successful training will enable you to confidently: interpret & identify the energies (chi) in a building, business, home & environment, analyse & remedy to capitalize on the Chi, work & promote your business as a Feng Shui consultant.

- This comprehensive course is covered weekdays, Weekends, as well as evenings.
- Full attendance & homework must be completed before sitting the Assessment.



# 新

2012-13

**“Certificate IV in Chinese Astrology”  
-Four Pillars of Destiny I  
(21929VIC)**

**Recommended books:**

- **Feng Shui : The Pillars of Destiny** - Grand Master Raymond Lo
- **Myths, Tools and Cures** - Sally Fischmann

**Equipment required:**

- The Thousand year Calendar
- Chinese Almanac (Tong Shu) 2012 (Available through the Ministry)
- Courses are taught at the “Sacred Keys” healing and learning centre

**Prerequisites are an open mind, commitment and time.**



This course provides an in depth analysis of the Chinese characters unique to a person's birth date (hour, day, month & year ).

It is based on the pure & classical methods of “Solar Astrology”.

Four Pillars takes a look at the patterns that make you & travel with you throughout your lifetime. Your birth gives a description of the qualities of the human Spirit through the 5 elements of nature. Properly understood, these elements of Chinese philosophy begin to change our perception. How we live, look & filter everything, your strengths, money, career preferences, health, relationships, romance, children, old age, and compatibility with others & status, as no 2 people are the same. Practical training with examples of people past, present, family & friends charts. Successful training will enable you to work either full/part time. Students will be able to demonstrate pure, classical & correct Solar Astrology readings and will be able to confidently interpret, identify & construct a person's horoscope. You will be able to work & promote a Four Pillars of Destiny consulting business.

- This comprehensive course is covered weekdays, Weekends, as well as evenings.
- Full attendance & homework must be completed before sitting the Assessment.



# 2012 “The Water Dragon”

Free Yearly Workshop

Please, please, please, please, please, please,  
Bring your charts' there will not be any time to do  
charts before the workshops.

- What does the Year mean?
- What changes to implement in your home?
- How it will affect you?

These workshops give you an insight as to what energies the Year brings for you and your home, making life less challenging.

Consultants will be on hand to answer questions.

If you've had a consultation; please bring your “Home plan” and/or your “Personal Destiny chart”.

If you are unable to attend the free workshops please call to organise a time-The fee is \$150.



**You must book for the workshops**

Please text; **0405929658**

Number of people and to which venue.

Or Email

[sally@ministryoffengshui.com.au](mailto:sally@ministryoffengshui.com.au)

[www.ministryoffengshui.com.au](http://www.ministryoffengshui.com.au)

Book a Workshop close to you.

- Friday 10<sup>th</sup> Feb  
6pm  
Rowville Library  
Stud Road,  
Rowville.



- Friday 3<sup>rd</sup> Feb  
6pm  
Beaumaris Library  
Community Hall  
Reserve Road,  
Beaumaris.



- Saturday Feb 4<sup>th</sup>
- Sunday Feb 5<sup>th</sup>  
4pm  
“Sacred Keys”  
Healing & Learning Centre  
113 Miller Street,  
Epping.

Come early to browse the gift shop  
And/or tour the healing rooms.



# “Ministry of Feng Shui”

Tools and remedies for homes  
& Books for knowledge & courses.

- Book 1- “Tools, Cures and Myths” clearing the misconception of Feng Shui
  - Book 2- Ministry of Character reading
  - Book 3- Ministry of Four Pillars of Destiny (students)
  - Book 4- Ministry of Flying Star Feng Shui (students)
  - 2012 Water Dragon Calendar.
  - 2012 Tong Shu Almanac (for students)
  - Chimes
  - 6 Bells
  - Dragon Turtles
  - 6 Coins
  - Animal character for the year
- Available at all workshops.**

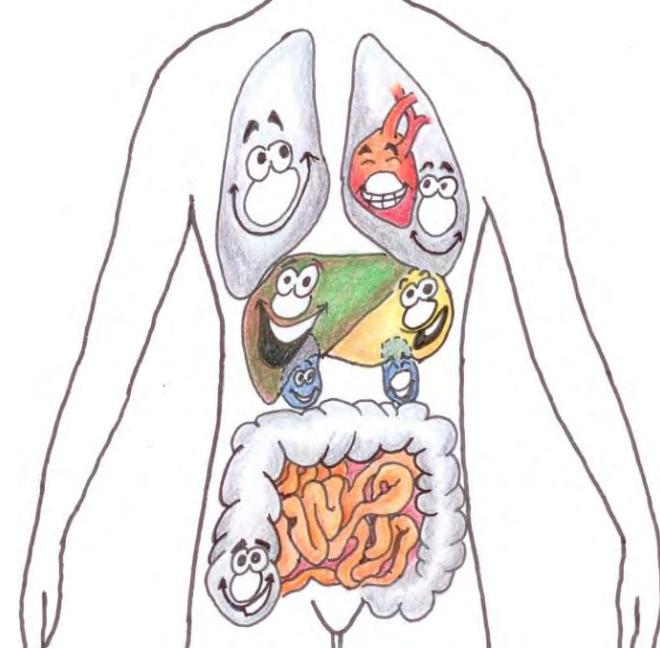
## The 5 Elements

Will also be workshopped throughout the year; Favourable and unfavourable, 5 elements deficiency or excessive, and illnesses of the 5 elements.

- Dates to be confirmed.

## Cosmic Inner Smile

*“Peace begins with a smile.”*



Our organs are also tense and tight, smiling through the Taoist spiritual development and “Qi” (Energy) “Gong” (work) will shift the emotional rubbish trapped in your organs.

**Starting date: Wednesday**

**5<sup>th</sup> & 12<sup>th</sup> September**

- Classes are in 1½ hour sessions.
- Time and investment will be available closer to the date.

# Physiognomy

**“It takes courage to grow up and turn out to be who you really are”**

Interpreting a character from the outer appearance is one of the oldest sciences discover what your face, hands, posture, walk, etc, say about you.

The ability to do a character reading is a source of pleasure and profit.

Peoples' characters are an open book.  
“Human nature” is never boring.



**Starting date: Monday**

**4<sup>th</sup> 18<sup>th</sup> 25<sup>th</sup> June,**

**16<sup>th</sup> 23<sup>rd</sup> July, 2012**

Discover yourself in 10 hours.

- Classes are in 2 hour sessions.
- Investment \$100 per class (2 hours)
- Times will be available closer to the date.

**Pre requisite:**

- **Ministry of Character reading Book-** by Ministry of Feng Shui.

## Form School-Environment



The workshop looks at Landforms through the Environment (what you can see)-Form School Mountains &/or Rivers; Ancestors, Grandparents, parents, Burial sites, land forms to build home or business.

- *There will be many places to visit.*

**Starting date: Saturday 4<sup>th</sup> August,  
1<sup>st</sup> & 8<sup>th</sup> September 2012**

- Workshops will be held over 3 Saturdays.  
Investment \$250 (10am-2pm) per day.
- Further revision dates will be held for those interested.

## I Ching divination

The events of everyday Life can be predicted.



The I Ching can be used to predict the future, make decisions, foretell & analyse by means of calculation. Based on the natural laws of the universe in Ancient Chinese; using the Chinese Animal Characters, 5 elements & the 8 Trigrams.

This in turn gives you the answer as well as gaining an intuitive understanding of this Traditional Chinese outlook.

**Starting date: Saturday  
13<sup>th</sup> & 27<sup>th</sup> October, 2012**

- Workshops will be held over 2 days.
- Investment \$300 per day (10am-2pm)
- Revision dates will be held for those interested.,

**Pre-requisites:**

- “Certificate IV in Four Pillars of Destiny”
- Ministry of Four Pillars of Destiny (Book)

## Feng Shui Part 2

The Formulas and theories of traditional and ancient Feng Shui married with Four Pillars of Destiny makes Part 2 challenging.

We look at many of these; Water formulas, Landscape theories and placement.



**Starting date: Monday 5<sup>th</sup> 12<sup>th</sup> 19<sup>th</sup> 26<sup>th</sup>  
November, 3<sup>rd</sup> December, 2012**

- Workshops will be held over 6-7 lessons.
  - Investment \$120 per class (7-9pm)
- Revision dates will be held for those interested.

**Pre-requisites:**

- “Certificate IV in Four Pillars of Destiny”
- “Certificate IV in Feng Shui consultancy”

# Four Pillars of Destiny

## Part 2

The second part of Four Pillars of Destiny deals with many symbolic stars which reveal more about a destiny through conventional and unconventional analysis.



**Starting date: Tuesday**  
**5<sup>th</sup> 19<sup>th</sup> 26<sup>th</sup> June**  
**August 7<sup>th</sup> 21<sup>st</sup> & September 3<sup>rd</sup> 2012**

- Workshops will be held over 6-7 lessons.
  - Investment \$120 per class (7-9pm)
- Revision dates will be held for those interested.

### Pre-requisites:

- “Certificate IV in Four Pillars of Destiny”.

# 100% Chi Homes

**Every person has the right to a healthy, harmonious and successful life.**

Although Geobiology & geopathic stress is not a Feng Shui concept, it can be used to improve Chi percentage in any building.

Practiced by many; The Celts, Greeks, Romans, Egyptians and Vastu, all wanted vitality from their living space.

Today we can do that by using flowing Water (knowing where to place it), fresh air and the type of materials in our home and natural surroundings will help us remain positive.

The workshops are to explain the energy flow which has in the past been associated with Feng Shui, BUT, it is not Feng Shui, it is an energy flow.

A building with low or bad flow can be the cause of frequently occurring diseases and negative effects on humans, plants and animals.



**Starting date: Sunday**  
**12<sup>th</sup> August, 2012**

- The Workshop runs from 10am-2pm.
  - Investment \$150.
- Revision dates will be held for those interested.